

Company presentation

Prospera Europe
Ltd.

The digital sheet metal
factory

2024



Our services

Laser cutting

- Carbon steel up to 22 mm
- Stainless steel up to 16 mm
- Aluminium up to 12 mm
- Copper up to 10 mm
- Titanium up to 10 mm
- Bronze up to 10 mm
- OVS, optic detection system



Edges

- Deburring
- Chamfering
- Brushing
- Grinding



Bending

- Pressing force 100 tons
- 3.000 mm bending length
- Active angle setting

Additional:

- ✓ Threading
- ✓ Countersinking
- ✓ Pressing of fasteners
- ✓ Laserwelding
- ✓ Stud welding
- ✓ Nuts welding
- ✓ Spotwelding
- ✓ Blasting
- ✓ Sheet rolling
- ✓ Lasermarking

In cooperation:

- ✓ Galvanizing
- ✓ Hot-dip galvanizing
- ✓ Pickling
- ✓ Powder coating
- ✓ Anodizing

Lot sizes:

- ✓ From 1 piece
- ✓ To big series



Laser machines

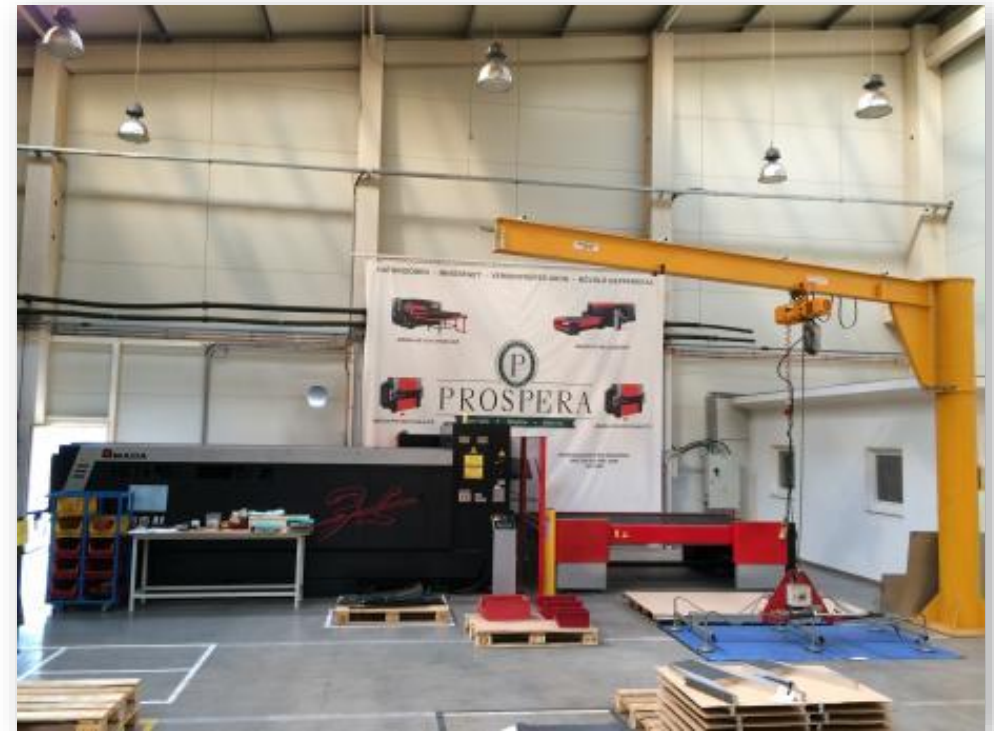
AMADA LCG-3015 AJ Fiber 4 kW

- Year of manufacture: 2017



AMADA LCG-3015 AJ Fiber 2 kW

- Year of manufacture: 2014



Press brake machines I.

AMADA HFE M2 100.3

- Year of manufacture: 2013



TRUMPF TruBend 3100

- Year of manufacture: 2018



Press brake machines II.

TRUMPF TruBend 3066

- Year of manufacture: 2018



TRUMPF TruBend 7036

- Year of manufacture: 2015



Deburring, edge chamfering, grinding

TIMESAVERS 22-serie-900-WBB

- Year of manufacture: 2014



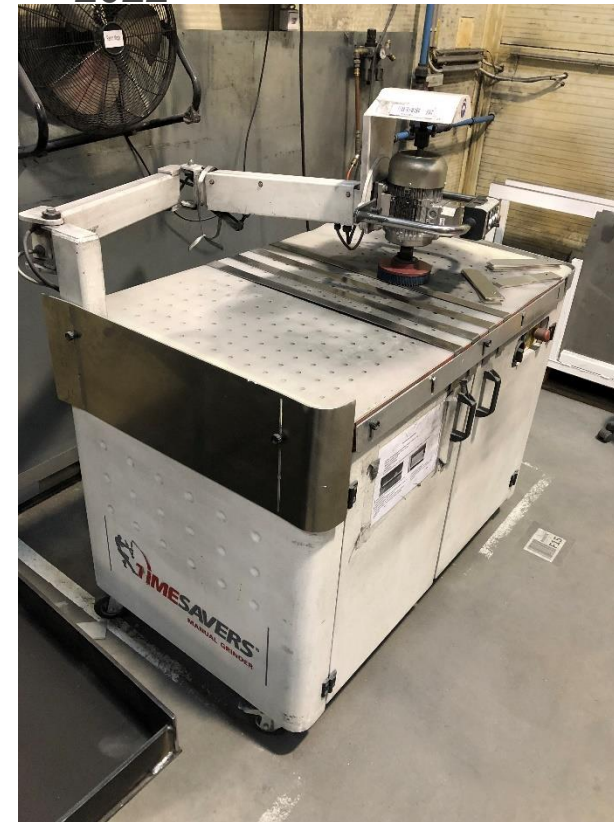
LÖWER CrossMaster DD300

- Year of manufacture: 2020



2 x TIMESAVERS Grindingmaster 10-serie

- Year of manufacture: 2016, 2022



KUHLMEYER EBSC

- Year of manufacture: 2023



Threading, sinking, blasting

Drilling machines

- Year of manufacture: 2020, 2015, 2014



Blasting cabine

- Year of manufacture: 2020



Fastener pressing, stud welding, nut welding

2 x PEMSERTER® Series 4

- 2014, 2020



SOYER PTS-500

- 2015



KOCEVAR

- 2021



Laserwelding and lasermarking

Faser laserwelding machine Vector Steel – 2 kW

- 2023



Lasermarking machine ProLase

- 2023



Our strengths

Quality

- ✓ ISO 9001
- ✓ Inspection plan
 - ✓ First samle inspection
 - ✓ Random inspection
 - ✓ Final inspection
- ✓ Drawings and inspections made digitally on tablets
- ✓ Transparent internal processes for employees
- ✓ Lots of training
- ✓ Measuring instrument inspection
- ✓ New technologies
- ✓ Machine capability test
- ✓ 3.1 Material Certificate
- ✓ VDA Protocol
- ✓ Application of 5S

Delivery time

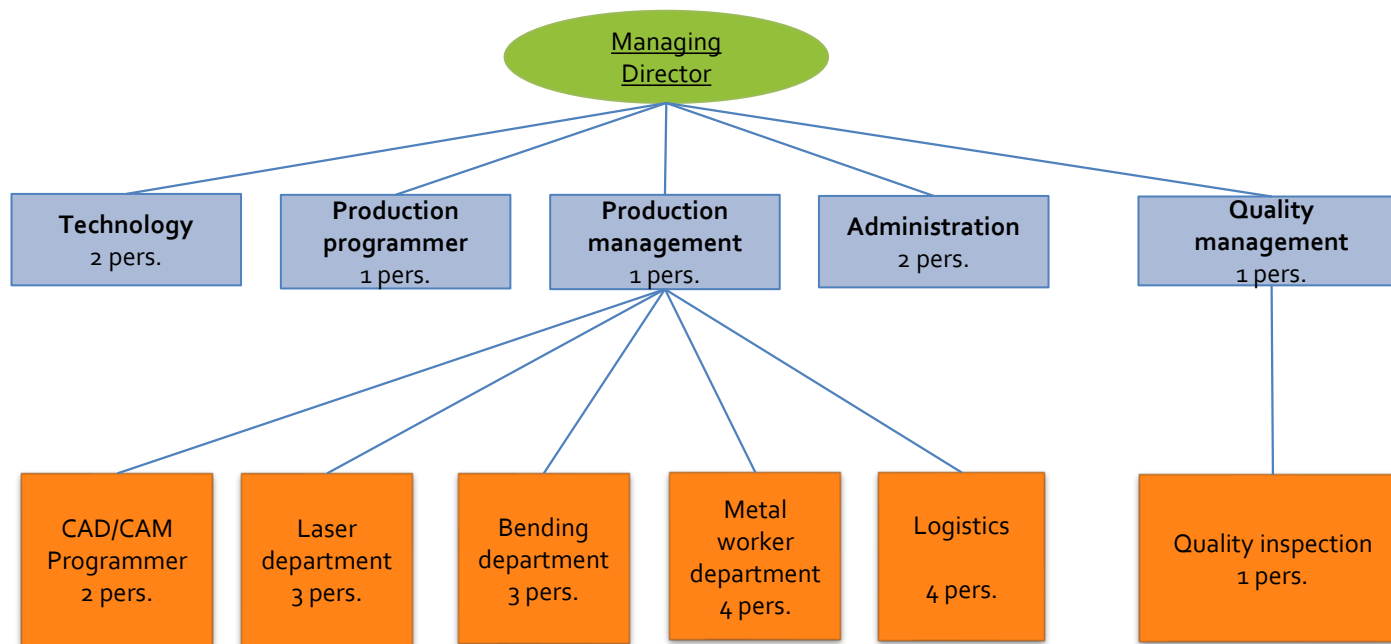
- ✓ Production scheduling software (Asprova)
- ✓ Production on stock
- ✓ JIT delivery
- ✓ Kanban delivery
- ✓ FIFO principle
- ✓ Shipping notifications
- ✓ Notifications of delays

Partnership

- ✓ Honest and fast communication
- ✓ Quick quotations (1-2 days)
- ✓ Product identifications at shipments (QR code, barcode)
- ✓ Customer portal
- ✓ Fair complaint handling - 8D
- ✓ Liability insurance
- ✓ Owners work actively in management

Organization

- Established: 2004
- Owners: Böröcz András, Takács Gábor
- Organization chart :

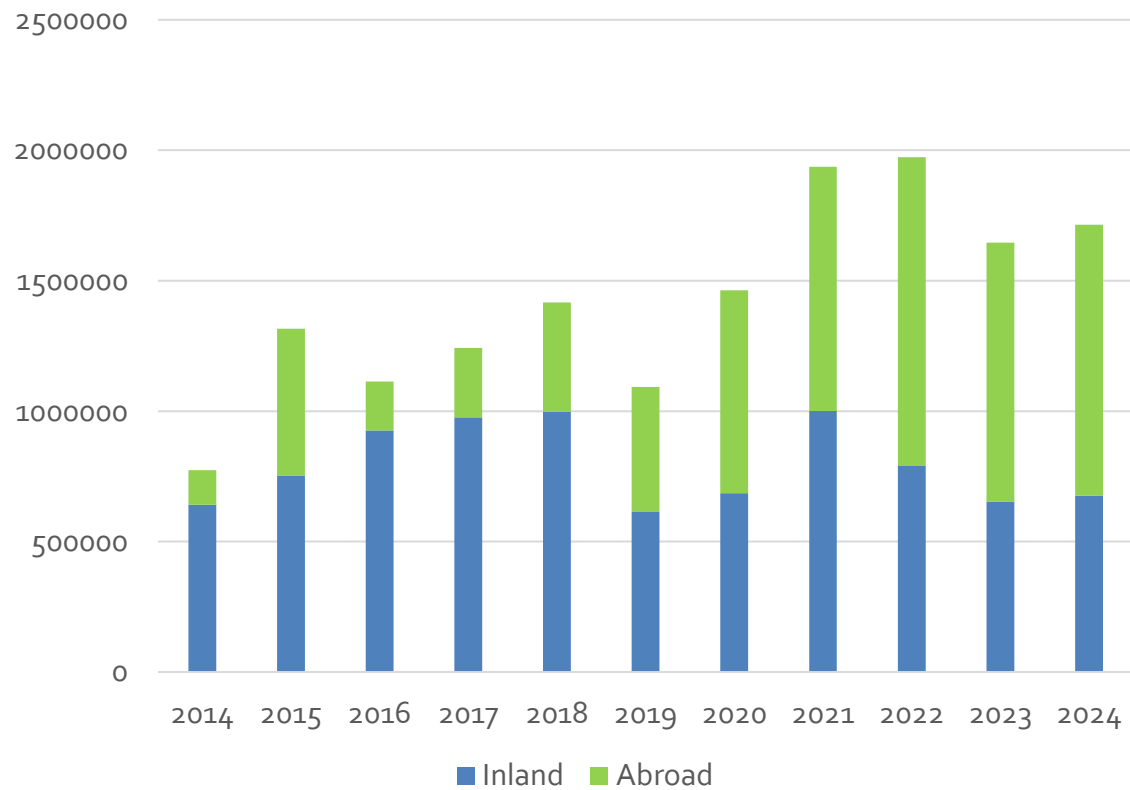


Factory of the year

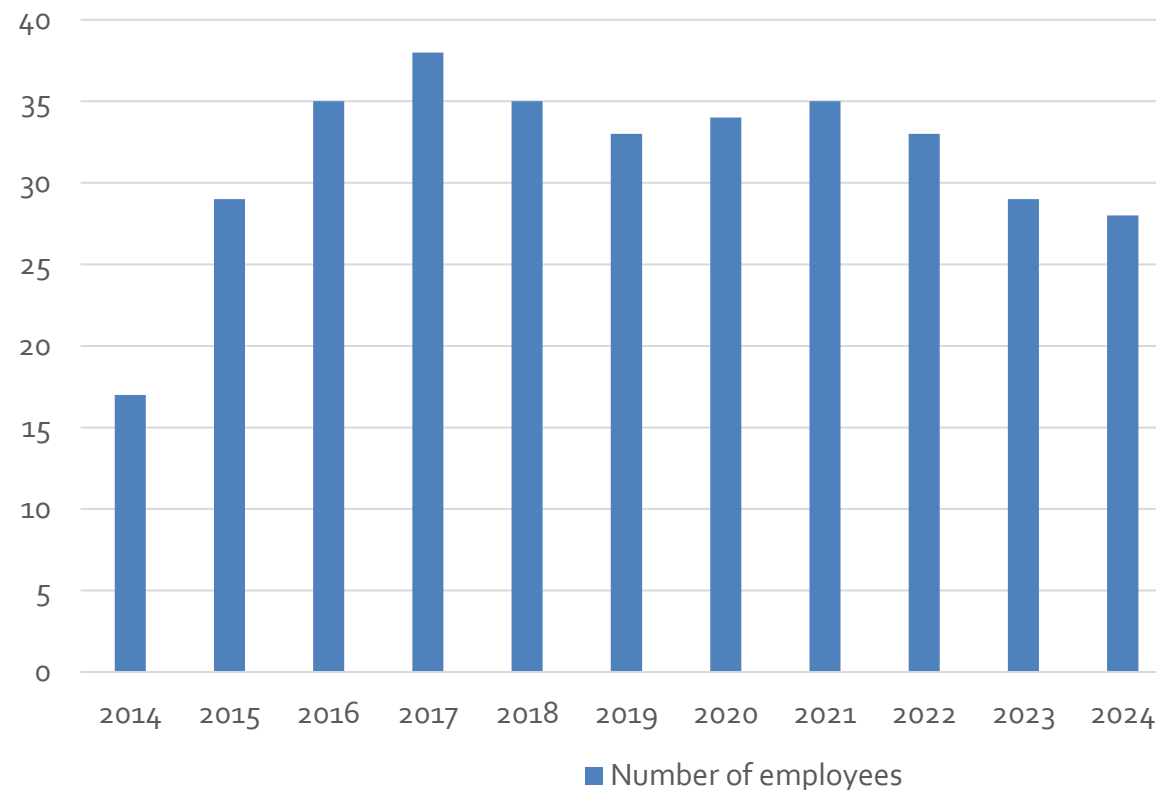


Financial plan

Revenue (EUR)



Number of employees



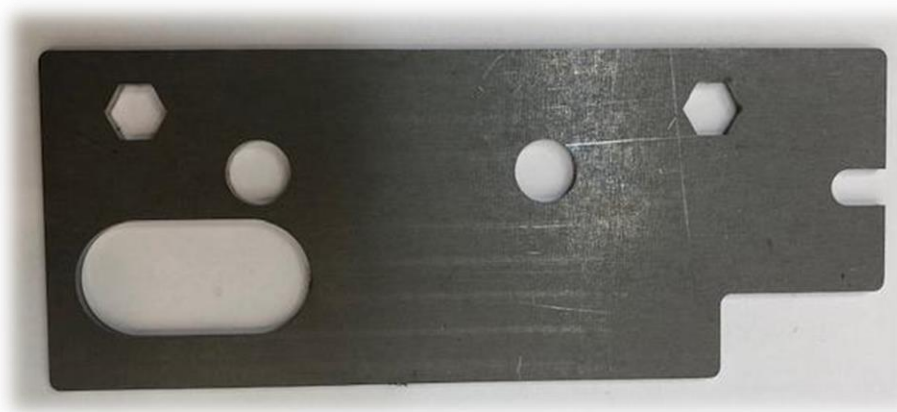
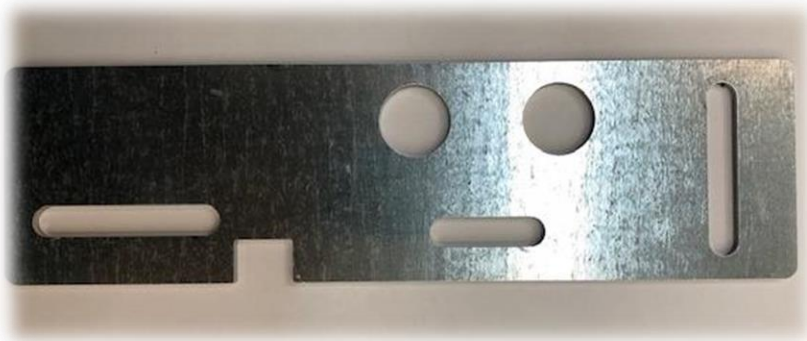
**FINANCIALLY STABLE
COMPANY ACCORDING TO
THE EVALUATION OF BISNODE**



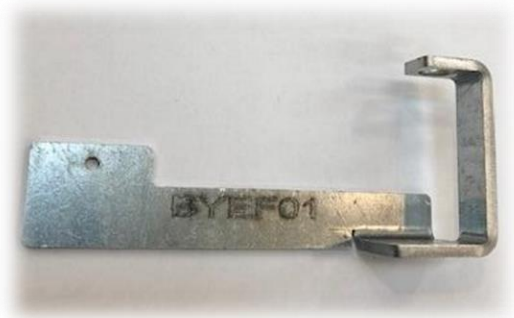
PROSPERA

Léteztetés • Előnyök • Hozzájárulás

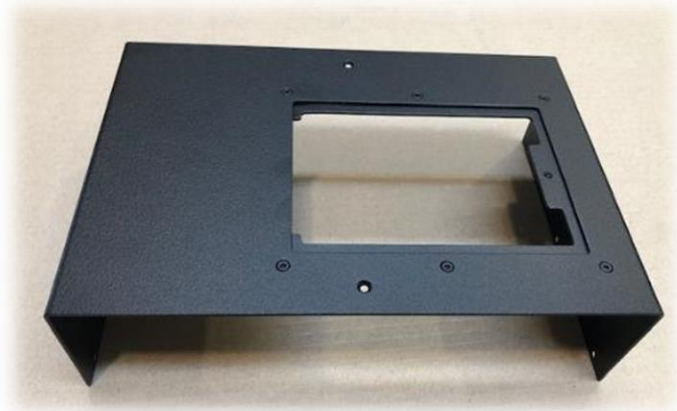
Reference products – laser cuted parts



Reference products – bended parts



Reference products - other



Powder coated



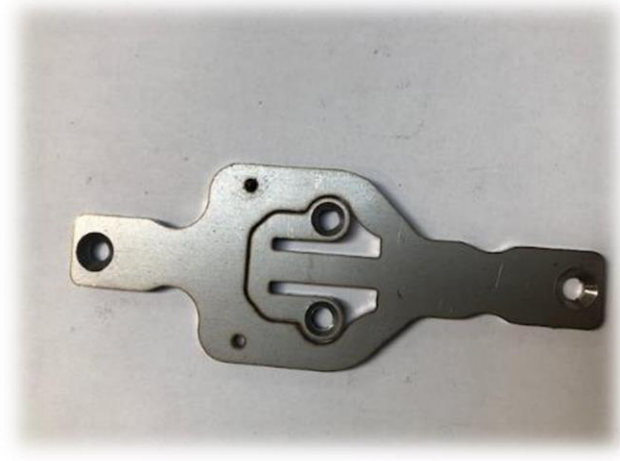
Pressed parts



Edge chamfer



Sinking



Sinking



Sinking + threading

Contact



Address:

 Egri út 036/24 hrsz. H-3360 Heves

 www.prosperaeu.hu

Contacts:

 Managing Director - Takács Gábor

▪ +36 70 367-9162

▪ takacs.gabor@prosperaeu.hu

 Office

▪ +36 70 701-7703

▪ info@prosperaeu.hu

